



TOPSOLID'WOOD

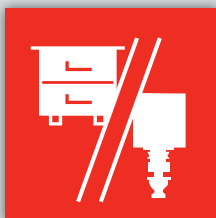
Essential new functions for nesting

Highly efficient bended components

New tools to create decorative panels

Automated machining of nestings

Improved realistic rendering performance



www.topsolid.com



CHECK OUT WHAT'S NEW

www.topsolid.com



Example of the fronts of a unit with perfect adjustment of the wood grain

PART CLUSTERS FOR NESTING

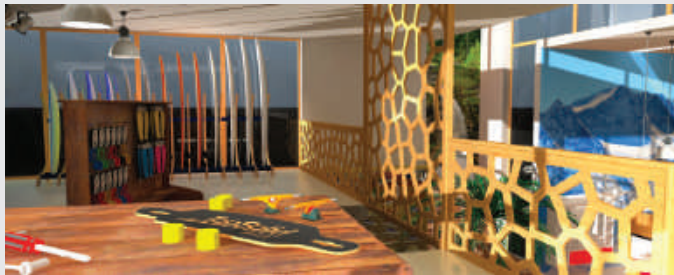
A new mechanism that matches the wood grain between the panels of an assembly. Using the grouping of parts in a nesting when machining makes it much easier to follow the direction of the grains between parts.



Example of a mold trim produced in just a few clicks

HIGHLY EFFICIENT BENDED COMPONENTS

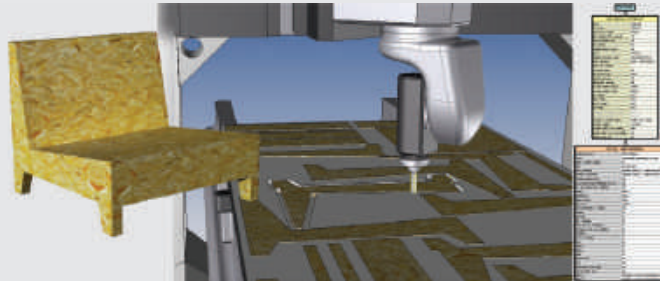
Two new functionalities, Curved component driver and Bended component, Simplify the creation of components on a curve and automate the connecting cuts, even in the most complex cases.



Example of an openwork decorative panel designed with TopSolidWood 2018

ADVANCED DRAWING FUNCTIONS

New tools for drawing, points seedling, triangulation, voronoi and interlacing allow much more freedom when modeling and machining decorative panels.



Example of the automated machining of an armchair using nesting controlled by scripts

AN AUTOMATED NESTING PROCESS

New operations sorting and optimization options for nested parts and the personalization of nesting launch scripts are available for optimal time-saving.



A truer than life image, thanks to the field depth settings

IMPROVED REALISTIC RENDERING PERFORMANCE

The new Field Depth and Sharpness options produce even more realistic images.